

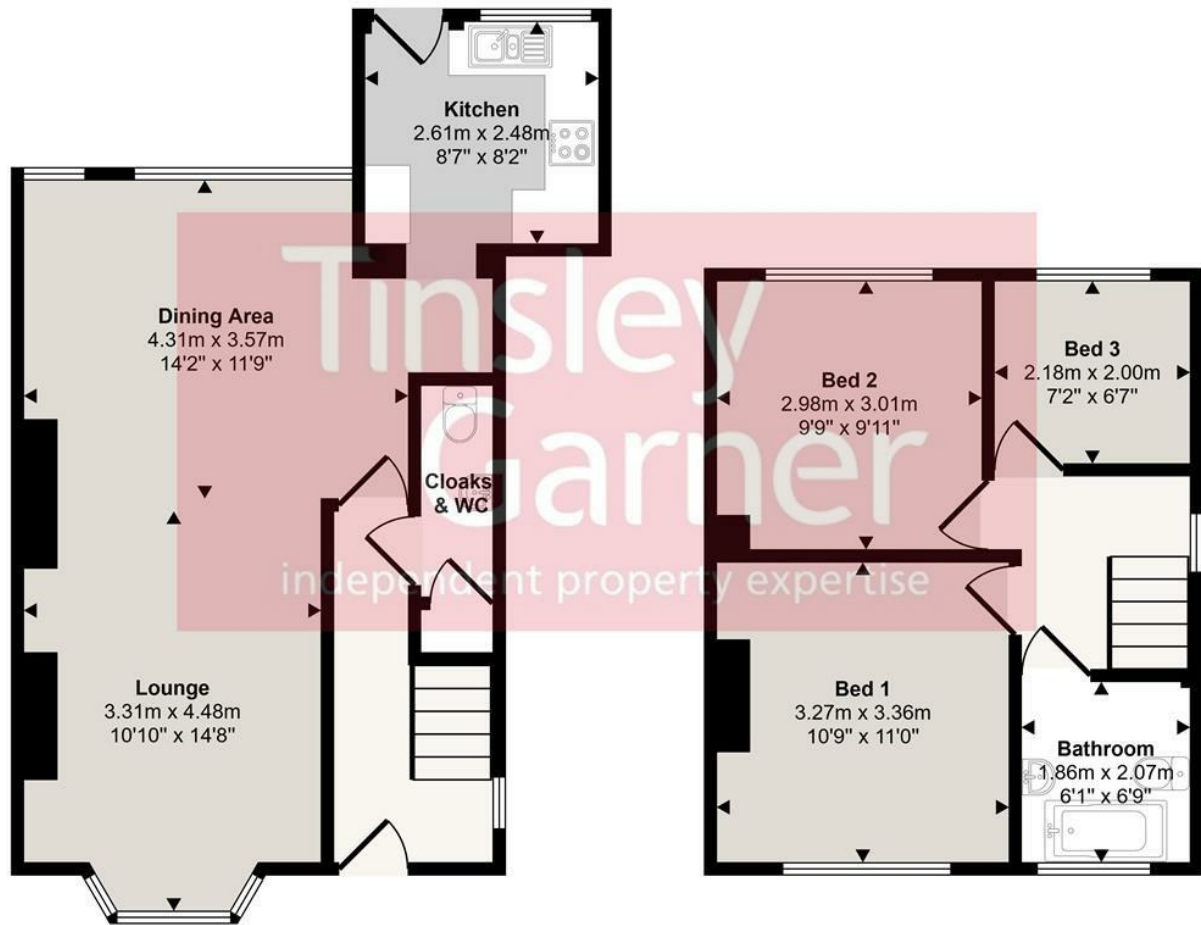


12 Longfield Avenue, Stone, Staffordshire, ST15 0DN

A Renovated Traditional Semi-Detached Home in a Convenient Location Situated in a popular residential cul-de-sac, this traditional semi-detached house is ideally located close to local amenities and within half a mile of Stone town centre. The property has recently been renovated and updated, having previously been extended to create a generous open-plan ground-floor living space. The accommodation comprises an entrance hall with an original mosaic tile floor, a downstairs WC, a dual-aspect open-plan lounge/dining room, a newly fitted kitchen, three bedrooms, and an upgraded family bathroom. The home benefits from gas central heating with a modern combi boiler and uPVC double-glazed windows throughout. Occupying a larger-than-average plot for this location, the property offers a good-sized frontage with off-road parking for several vehicles, along with a large enclosed store to the side of the house. To the rear is a sunny south-west-facing garden, enjoying a good degree of privacy and not directly overlooked. Offered for sale with no upward chain.

£265,000

Approx Gross Internal Area
81 sq m / 874 sq ft



First Floor
Approx 35 sq m / 372 sq ft

Ground Floor
Approx 47 sq m / 502 sq ft

This floorplan is only for illustrative purposes and is not to scale. Measurements of rooms, doors, windows, and any items are approximate and no responsibility is taken for any error, omission or mis-statement. Icons of items such as bathroom suites are representations only and may not look like the real items. Made with Made Snappy 360.

